



# Pollinator Pathway Cape Cod

*Increasing pollinator-friendly habitats and food sources for bees, butterflies, hummingbirds and other pollinating insects and wildlife across Cape Cod.*



## Join the Pathway!

Put your garden on this map.

It is quick and easy to register. Your "garden" can be large or small or just pots on your deck. If you support the PPCC goals and have some native plants in your garden, join us by registering.



[Pollinator-Pathway.org/towns/cape-cod](http://Pollinator-Pathway.org/towns/cape-cod)

# DID YOU KNOW?

## What is the "Pollinator Pathway"?

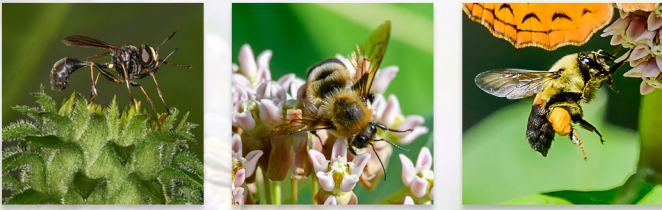
The Pathway is both public and private properties that create corridors of pesticide-free native plants offering both nutrition and habitat for pollinating insects and birds. Even the smallest green spaces, like flower boxes, curb strips, pots of native plants on your patio, can be part of a pathway.

## Why is a "Pollinator Pathway" necessary?

Native pollinating insects typically travel small distances, they will thrive only with native plant resources for pollen, nectar and habitat.

## Why are native plants essential to pollinators?

Pollinators need the plants they evolved with. These host plants are a necessary part of their life cycles.



## FACTS ABOUT OUR NATIVE POLLINATORS:

- In our region, pollinators include butterflies, wasps, moths, flies, beetles, hummingbirds, and 400 species of bees.
- Moths take the night shift and their hairy underbellies make them very efficient in moving pollen.
- Bumble bees, using "buzz pollination," are 2-4 times more effective pollinators than honeybees.
- Unlike the European honeybee, the majority of our native bees are solitary nesters.
- Many bees nest in the ground and can't do so through a thick layer of bark mulch.



# What Can You Do?

According to the Xerces Society, "The primary habitat features used by pollinators and other insects for shelter include stems and branches of trees, shrubs, and wildflowers; leaf litter; undisturbed ground; bare ground; dead wood; brush piles; and rock piles." By adding these features to your yard, and not so thoroughly cleaning up your garden each fall, along with not using pesticides and introducing native plants, you provide a landscape that attracts and supports native pollinators.

## Make it easier for the pollinators to find a supportive ecosystem by following these four principles:

- 1 ADD** native trees, shrubs and plants
- 2 SUBTRACT** a little lawn
- 3 AVOID** chemical fertilizers and pesticides - they're not healthy for pollinators or anyone else
- 4 LEAVE** the leaves on your garden beds in the fall

## Change Your Lawncare, Support Nature

- Suburban homes have a tradition of green lawns, but should Cape Cod look the same?
- Beautiful "Cape Cod" lawns are better adapted to our sandy soil conditions and drought periods. They are easier to maintain, support nature, and leave more time for you to enjoy a beautiful and natural Cape Cod.
- A turf lawn treated with fertilizers and pesticides is an additional cost to you, and the yard chemicals are harmful to children, pets and pollinators.
- 40% of the chemicals used by the U.S. landscape industry are banned in other countries.
- Lawn chemicals and frequent mowing creates a wasteland for wildlife.
- It is a myth that lawn and garden mosquito sprays can be applied in a manner that won't kill bees and other pollinators.
- Studies show that mowing less frequently supports bees (Biological Conservation, 2018) and will save you time and money.





Photo Credit - Nancy L. Graupner



Visit our website to find local examples of native plant gardens, get a list of New England Native Plants that will grow well on Cape Cod, find a garden center that sells native plants, select a landscape designer to help with your garden.  
**[Pollinator-Pathway.org/towns/cape-cod](https://Pollinator-Pathway.org/towns/cape-cod)**



FOR MORE INFORMATION, QUESTIONS OR ORGANIZATION INTEREST IN PARTICIPATION PLEASE EMAIL US AT:  
**[PollinatorPathwayCapeCod@gmail.com](mailto:PollinatorPathwayCapeCod@gmail.com)**

## Learn More:

Association to Preserve Cape Cod, Native Plant Initiative  
[APCC.org](https://APCC.org)

Grow Native Massachusetts  
[GrowNativeMass.org](https://GrowNativeMass.org)

Native Plant Trust  
[NativePlantTrust.org](https://NativePlantTrust.org)

Xerces Society for Invertebrate Conservation  
[Xerces.org](https://Xerces.org)